

DigiPOP Digital Laser Packaging Solutions

Printing Guidelines

Choose Your Package & Let Your Imagination Run Wild

DigiPOP Digital Laser Packaging media is available as gloss cast coated C1S. DigiPOP media are pre-perforated packaging, mailing, promotional and presentation products that use a matrix cut and break-clean edge technology perfering process for guaranteed runability and easy assembly.

Product Specifications

Description

- 10 pt Cover Gloss (219 g/m²)
- 12 pt Cover Gloss (247 g/m²)
- 14 pt Cover Gloss (293 g/m²)
- 14 pt Folding Board High Gloss (277 g/m²)
- 16 pt Folding Board High Gloss (293 g/m²), iGen3® or iGen4® only**
- 18 pt Folding Board High Gloss (330 g/m²), iGen3 or iGen4 only**

Sheet Size

- 8.5" x 11" Grain Short
 - 18" x 12" Grain Short (can provide Grain Long)
 - 20.5" x 14.33" Grain short (can provide Grain Long)
- Custom sizes available

Design Specifications

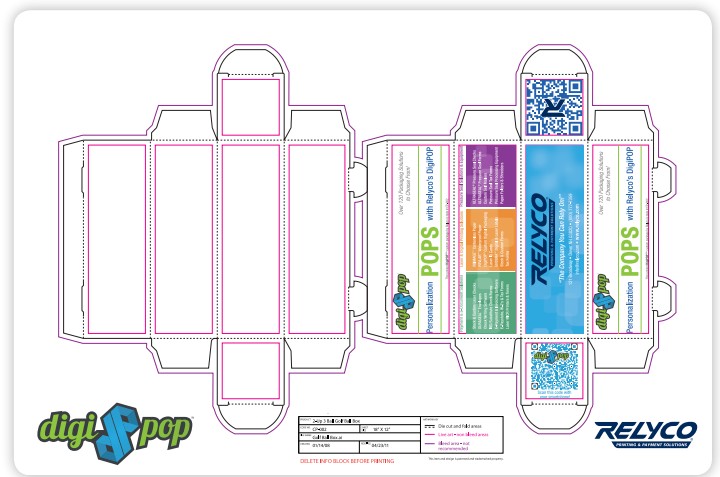
- Image placement should be within 1/8" of perforation & folding scores.
- Do not image over perforation or folding scores to prevent void.
- After purchase, all print templates will be provided in a layered PDF file. Other print files can be provided upon request.
- All print templates provide a legend defining the print areas, score areas and perf areas.
- Where glue or tape may be required to complete assembly of part, the following glues are suggested: Avery or 3M Purple Archival Permanent.
- Glue Stick. Suggested Tape: ¼" or ½" two-sided tape in tape dispenser;
- 3M Photo two-sided photo tape #924 or #917. **Note: When printing both sides, fuser oil may inhibit adhesion of tape.** To prevent this, it is recommended the fuser oil is allowed to disperse the evaporate. Then wipe or abrade the area to receive the tape. Tape-to-tape application may be required.

** May work with NexPress, Indigo and other digital presses. **
Please check with your printer manufacturer.

Product Diagram

- Templates of pre-perforated stock items available with purchase in editable/layered PDF files
- Templates will show legend for "bleed area" and "non-bleed live area"

Example of Template:



Physical Data

Paper Type	Caliper	Basis Weight	Brightness	Smoothness
10 pt Cover Gloss	10 mil	219 g/m ²	92	Very Smooth
12 pt Cover Gloss	12 mil	247 g/m ²	92	Very Smooth
14 pt Cover Gloss	14 mil	293 g/m ²	92	Very Smooth
14 pt Folding Board High Gloss	14 mil	277 g/m ²	92	Very Smooth
16 pt Folding Board High Gloss	16 mil	293 g/m ²	92	Very Smooth
18 pt Folding Board High Gloss	18 mil	330 g/m ²	92	Very Smooth

Run Instructions

- Media should be acclimated at printer environment for at least 24 hours prior to running
- Handle the paper carefully to avoid breaking any perforations when loading into paper trays
- Fan sheets gently before loading into the feed drawer



Run Instructions *(Continued)*

iGEN Users:

1. Into each of the 4 feed drawers place a wrapped ream of 14.33" x 20.5" paper. This will serve as a base.
2. Take 50 sheets of the stock and fan them being careful not to bend or break the perms and scores.
3. Place the 50 sheets in each drawer SEF (short edge feed) with tape-side inboard (away from the operator).
4. Set basis weight to 285 g/m2.
5. Set size to 14.33" x 20.5".
6. Program drawer auto switch.
7. Set output delivery to sample tray (not stacker).
8. Be aware that you will be limited to number of sheets in the drawer due to stack bias. It is important that the process is followed to the letter.

Perforated Product Assembly Handling Instruction

After printing, the pre-perforated Digital Packaging product is released from the waste portion of the sheet using a "Breaking Perf," not a standard mechanical tear perf.

1. Parts release from the sheet easily after they have been fused in the printing equipment.
2. When releasing the part from the sheet, place the sheet flat on table surface.
3. Place thumb or forefinger on inside perf part edge. With the other hand, fold the waste edge up along the perf line toward the print or gloss side of sheet. Then fold the sheet along the perf line away, or in the opposite direction. The sheet will then break cleanly at the perf line.
4. Once you have started the break of the perf, move along the edge of the perf line repeating steps #2 and #3 until part is completely released from waste.

Equipment Compatibility

DigiPOP digital laser media is comprised of 10 to 18 pt cover gloss or folding board gloss stock with a Relycoat coating on one side (C1S) similar to what was known as Kromekote.

DigiPOP has been successfully run by thousands of customers on many of today's most popular digital laser printers and even some ink jet printers. Relyco guarantees DigiPOP media is free from defect, but cannot guarantee runability in every printer unless it has been tested and verified by the printer manufacturer.

DigiPOP media are cover and folding board stock, and most of today's digital printers have settings and feed/tray specifications to accommodate this type of media.

All equipment runs differently and environments will also affect runability and it is highly recommended that you test run samples prior to full or final print run. Consult your printer representative for settings on 10 to 18 pt cover gloss and folding board media prior to print runs.

For more information, refer to the Custom/Media Compatibility Guide that came with your printer or ask your printer representative for more details on machine settings.

Care and Handling Instructions

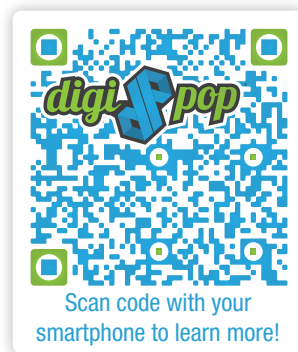
- Allow product to acclimate to print room conditions before opening package
- Allow cartons to condition for 24 hours and full pallets for 4 days.
- Handle the paper by the edges to avoid scratching, scuffing and fingerprints.
- Handle the paper carefully to avoid breaking any perforations when loading into paper trays.
- Print room conditions of 72°F and 45% relative humidity are recommended.
- Product should be returned to original package between uses.

To find out more

To order, call your Relyco representative at 1-800-777-7359, visit us online at www.relyco.com.

About Relyco

Relyco is the leading provider of business forms, laser & digital print solutions, checks, and pressure seal checks & forms. Understanding and meeting our clients' needs is always our first priority.



Follow us online!



121 Broadway | Dover, New Hampshire 03820
Phone: (800) 777-7359 | Fax: (603) 742-9993
www.relyco.com