



PlanetPress iWatch & IBM iSeries work hand in hand

For flexible printing of variable content documents on the iSeries

With PlanetPress iWatch, you can benefit from a whole new level of flexibility in the management of your document printing processes from you iSeries server and AS400's. PlanetPress iWatch enables you to select the desired output and send your documents to any printers that are configured on your network.

Whether you are printing invoices, cheques or green bar reports, you now have the ability to control your documents output with a simple configuration of PlanetPress iWatch on your server and without modifying your existing application. It's as simple as that.

Benefits

- No need for in between hardware: one less point of failure
- Easy to set up and manage PlanetPress documents on iSeries
- No need to modify existing application
- Store your PlanetPress documents on the iSeries

PLANETPRESS® iWATCH 5



System Requirements

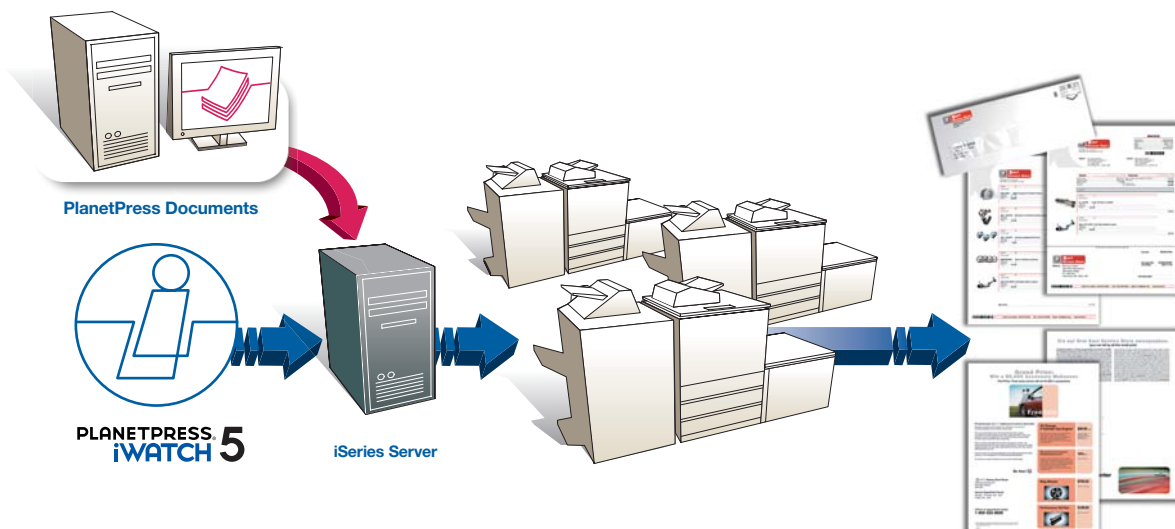
Hardware:

- iWatch runs on any AS/400 or iSeries processor.

Software:

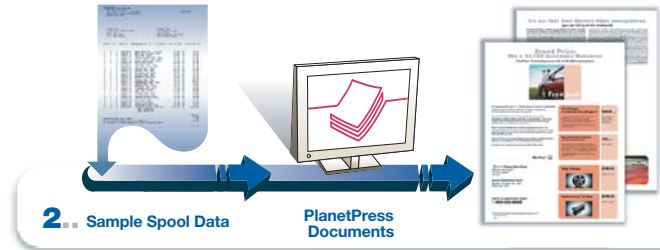
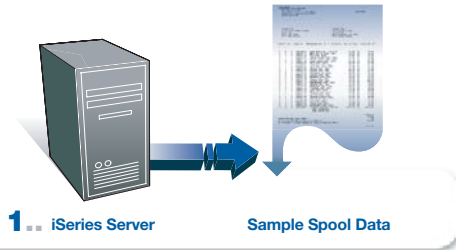
- iWatch runs on OS/400 V5R1M0 and above.

Flexible Printing **More Possibilities**



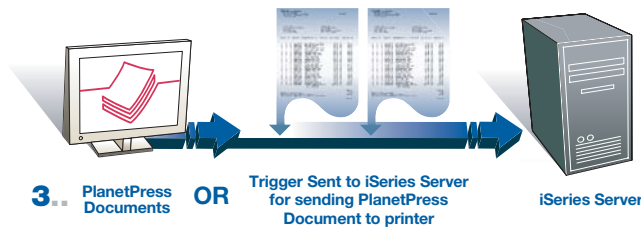
Process

1. Capture a sample spool data file from the iSeries server*. Using PlanetPress or PlanetPress Watch, you will ensure that you are capturing the exact data as it would be sent to the printer.



2. Use the PlanetPress design tool to develop the desired output. The user friendly PlanetPress GUI is highly flexible, allowing for the design of simple to complex variable content documents.

3. Once the design is completed, use a one step process to send the document directly from the PlanetPress design tool to the iSeries server via FTP. Alternatively, just the trigger can be sent to the host, and the PlanetPress document can be sent to the target printer's hard drive, Flash, or RAM. On the iSeries Server, one physical file contains all documents while another contains all triggers.



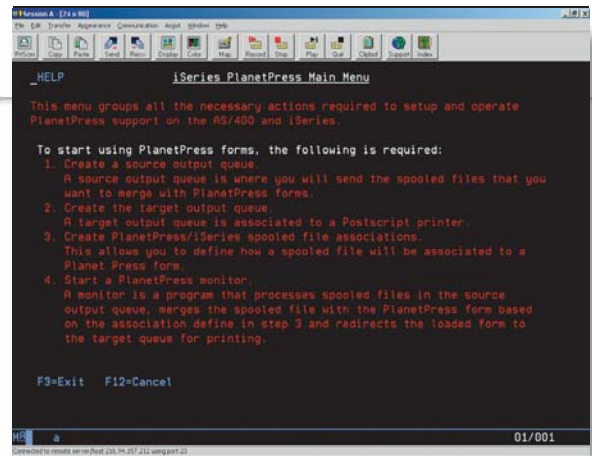
For times when the PlanetPress document needs to be sent to multiple printers, use the batch processing wizard to simultaneously send to multiple printers, to PlanetPress Watch (for output management to remote printers, archive, email and fax), and to iWatch, running on the iSeries server.

4. PlanetPress iWatch, running on the iSeries server, requires three steps when initially setting up a new PlanetPress Document:

- a. Set Up the Source Output Queue
- b. Set Up the Target Output Queue
- c. Set Up PlanetPress iWatch Monitor to dynamically associate the source data and PlanetPress document.

Now, whenever one of the iSeries operators needs to print a specific document, they only need to select the appropriate source output queue to use.

4.



*These steps are performed using the PlanetPress iWatch interface, which was built to resemble the iSeries server's current work environment to aid in a smooth transition.